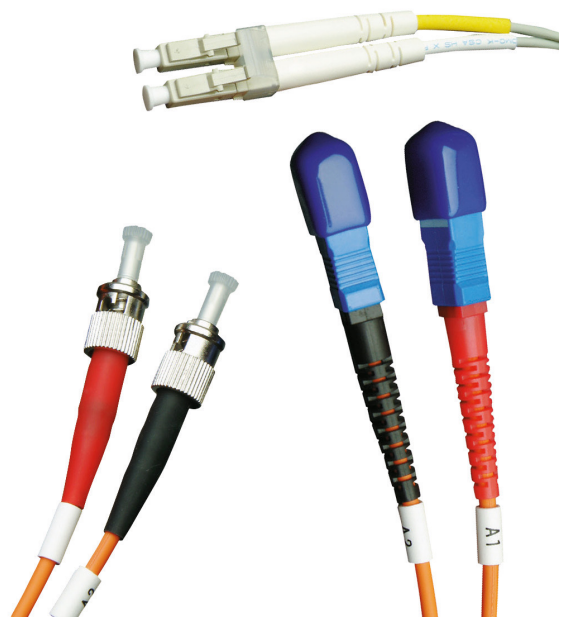


# Fibre Optic Cabling Patch Leads

Fibrefox patch leads are manufactured in-house, are 100% tested and certified and surpass the high standards required for datacomms and CATV applications. They are available in multimode OM1 62.5/125, OM2 50/125, OM3 50/125, OM4 50/125 and singlemode OS1 9/125 ruggedised cable.

The leads are manufactured in our advanced fibre termination facility under stringently controlled quality conditions. Our termination facility is one of the largest in the UK providing a high volume and fast turnaround service for all types of multimode and singlemode terminations.

Ordering Information	
Product Description	Part Number
<b>Multimode OM1 62.5/125 Patch Lead (1 metre)</b>	
LC to LC Duplex	005-324-010-01B
LC to SC Duplex	005-322-010-01B
LC to ST Duplex	005-323-010-01B
SC to SC Duplex	005-307-010-01B
SC to ST Duplex	005-308-010-01B
ST to ST Duplex	005-302-010-01B
<b>Multimode OM2 50/125 Patch Lead (1 metre)</b>	
LC to LC Duplex	005-624-010-01B
LC to SC Duplex	005-622-010-01B
LC to ST Duplex	005-623-010-01B
SC to SC Duplex	005-607-010-01B
SC to ST Duplex	005-608-010-01B
ST to ST Duplex	005-602-010-01B
<b>Multimode OM3 50/125 Patch Lead (1 metre)</b>	
LC to LC Duplex	005-634-010-01B
LC to SC Duplex	005-629-010-01B
LC to ST Duplex	005-635-010-01B
SC to SC Duplex	005-633-010-01B
SC to ST Duplex	005-648-010-01B
ST to ST Duplex	005-647-010-01B
<b>Singlemode OS1 9/125 Patch Lead (1 metre)</b>	
LC to LC Duplex	005-924-010-01B
LC to SC Duplex	005-922-010-01B
LC to ST Duplex	005-923-010-01B
SC to SC Duplex	005-907-010-01B
SC to ST Duplex	005-908-010-01B
SC to FC Duplex	005-911-010-01
FC to FC Duplex	005-914-010-01
LC to FC Duplex	005-926-010-01
<b>Multimode OM4 50/125 Patch Lead (1 metre)</b>	
LC to LC Duplex	005-662-010-01B
LC to SC Duplex	005-668-010-01B
SC to SC Duplex	005-669-010-01B



## Features & Benefits

- LC, SC and ST connector leads available
- 100% tested and certified
- Singlemode and multimode cable
- OM1, OM2, OM3 OM4 and OS1 cable
- Terminated under quality controlled conditions
- 1 m to 5 m lengths available from stock

## Multimode Connector Specifications

Connector Specification	Compliant with IEC 874-14
Ferrule Material	Full zirconia
Insertion Loss	Max. 0.3dB typical 0.2dB
Operating Temperature	-40°C to +85°C

## Singlemode Connector Specifications

Connector Specification	Compliant with IEC 874-14
Ferrule Material	Full zirconia
Insertion Loss	Max. 0.3dB typical 0.2dB
Return Loss	UPC>50dB, APC > 60dB
Operating Temperature	-40°C to +85°C